

---

# Corporate Overview



# Mission Statement



- We will be the world-class source for restoration of adhesive application equipment.
- We will provide value to our customers by reducing operating and maintenance costs and extending the life of their equipment investments.
- We will provide a safe, clean working environment with advancement opportunities for our employees.

# Goal Statement



- Our goal is to convince a generation to outsource its adhesive application equipment maintenance requirements to Newco.

-- Gerry Hicks, President

# Company History



- Founded in Lawrenceville, GA in 1996 by Gerry Hicks.
- Moved to a 7,500 square foot facility in Fairburn, GA in 2000.
- Moved into 13,325 square foot office and manufacturing facility on adjacent property in December of 2001.
- Twelve employees, including nine in manufacturing.

# Products and Services



- Melter Restoration and Upgrades
- Applicator Restoration
- Pump/Module/Valve Rebuilding
- Nozzle and Die Cleaning
- Flexible Hose Restoration
- Slot Die Reconditioning
- High Performance Roll Coatings
- Other High Performance Coatings

# Melter Restoration



- Rebuilder of any brand of adhesive melter including Nordson, Slautterback, ITW, Meltex, Mercer, and Acumeter.
- Melter is restored to “like new” condition:
  - ❑ Sheet metal stripped, cleaned, and powder-coated.
  - ❑ Entire hydraulic section cleaned and recoated with a TempCoat® high release agent.
  - ❑ Pumps, filters, motors and other wear items are rebuilt or replaced.
  - ❑ Completed melter is fully tested

# Melter Restoration

**Before**

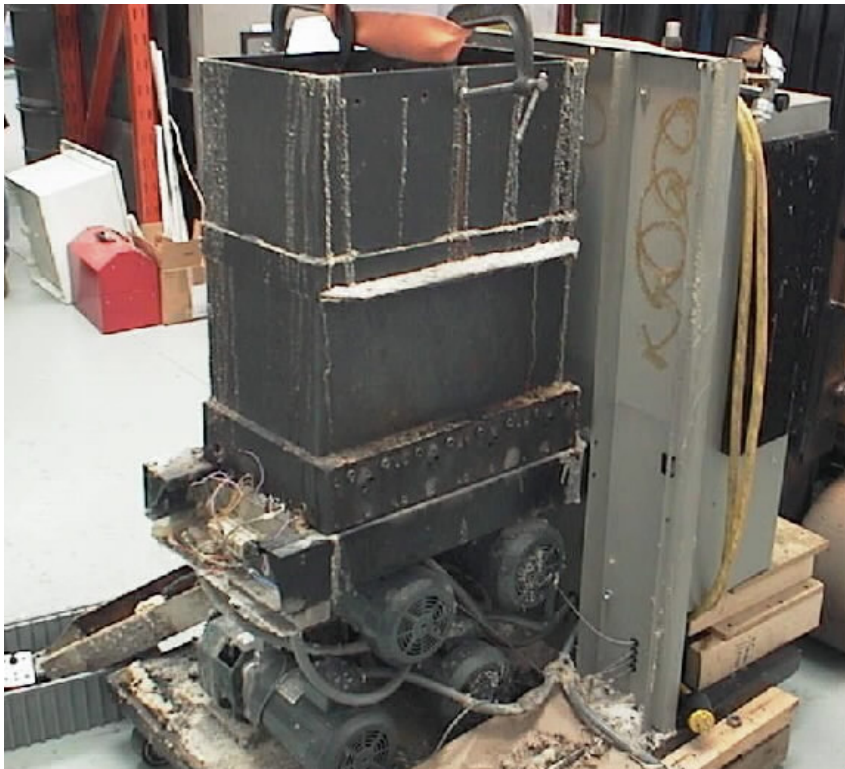


**After**



# Melter Restoration

**Before**



**After**



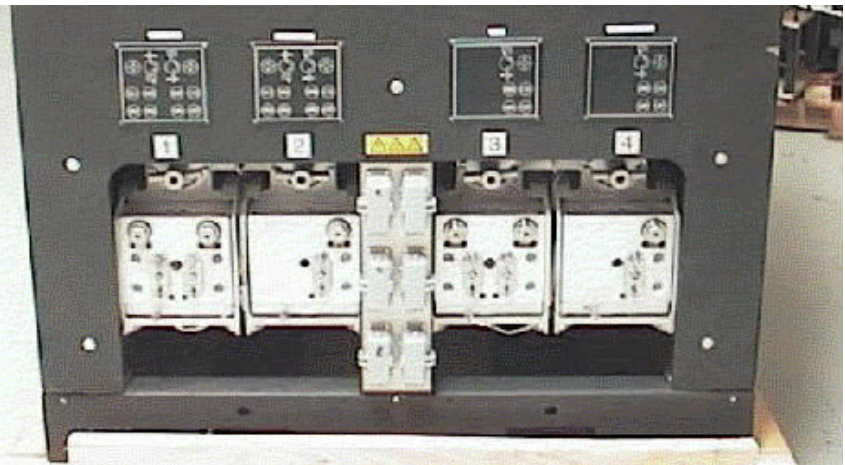


# Melter Restoration

**Before**



**After**



# Melter Upgrades



- Available upgrades include:
    - ❑ Addition of pumps and drives
    - ❑ Addition of UMI -- universal machine interface kit
    - ❑ Installation of additional hose/gun channels
    - ❑ Changes in pump styles (single to dual stream), pump capacities, and holding capacities
  - Other upgrades or changes quoted as needed
-

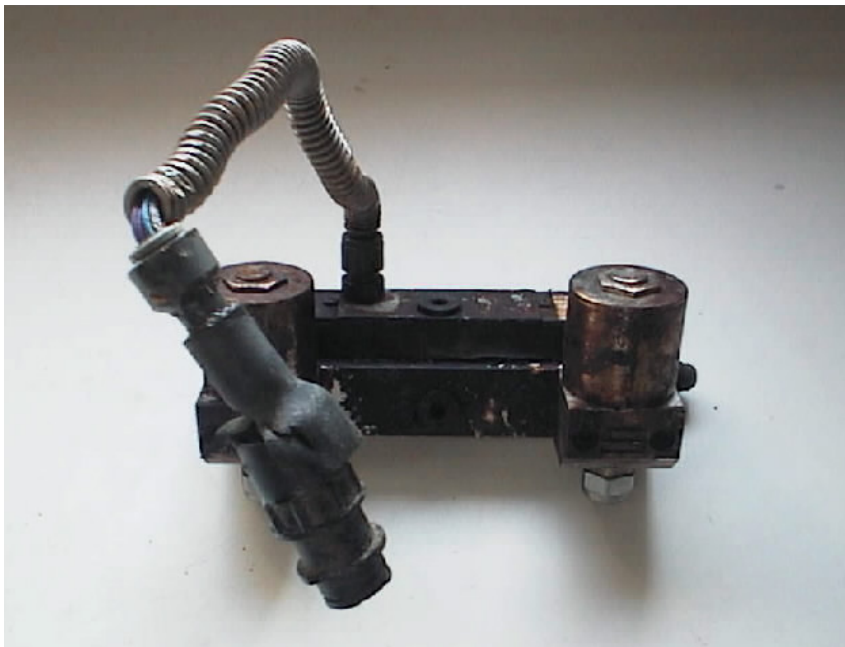
# Applicator Restoration



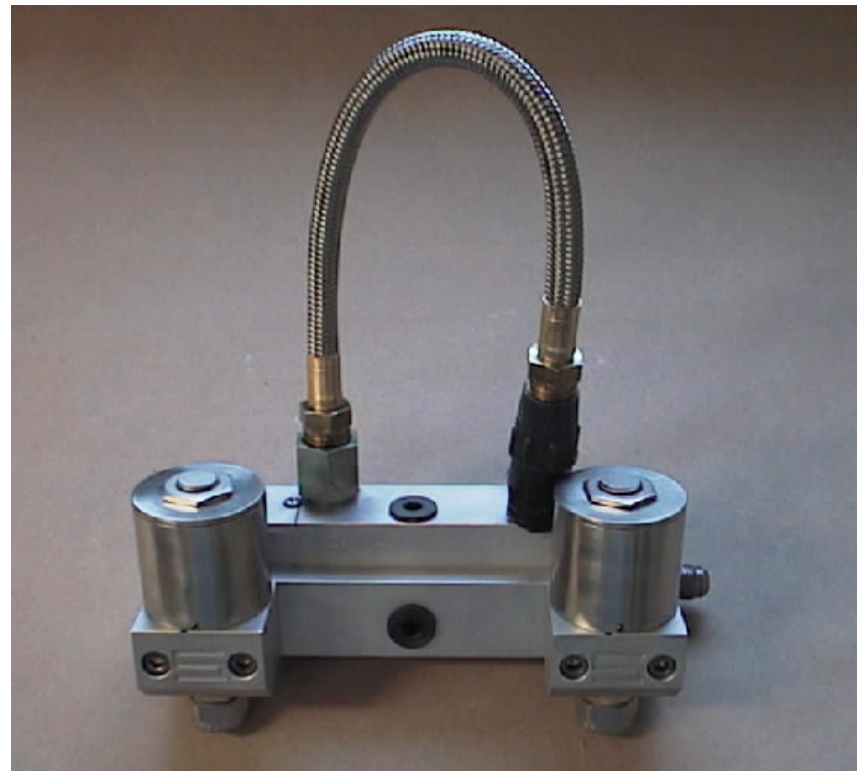
- All types of applicators are restored to “like new” condition. The Newco process includes:
  - ❑ Complete disassembly and cleaning of all components
  - ❑ Testing of heaters and sensors and replacement, if necessary
  - ❑ Rebuild of modules/valves (in most cases)
  - ❑ Cleaning of nozzles and dies
  - ❑ Reassembly and final test

# Applicator Restoration

**Before**



**After**



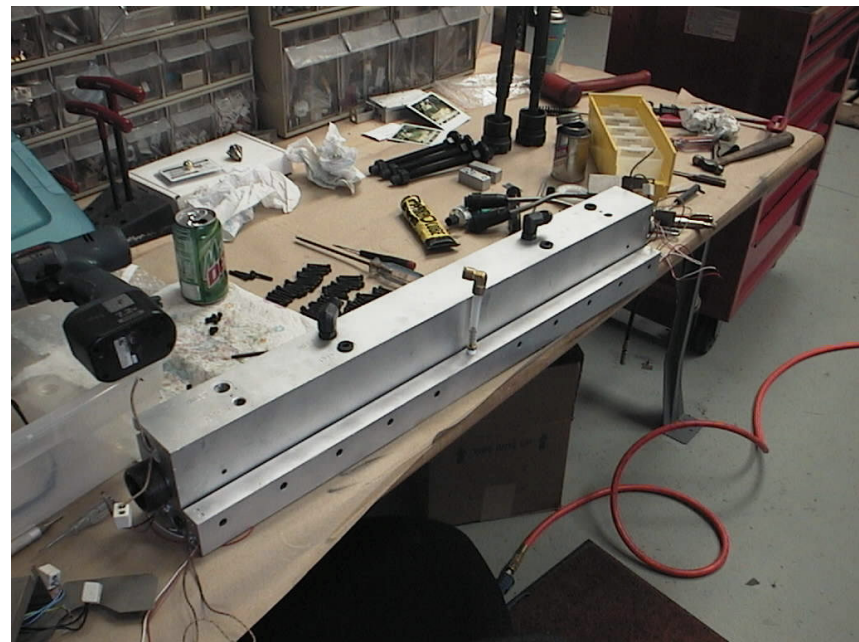


# Applicator Restoration

**Before**



**After**



# Pump/Module/Valve Rebuilding

- Pumps are disassembled, cleaned, inspected, repaired (if necessary) with OEM parts, reground as needed, reassembled, and tested at 1200 psi. This includes both piston pumps and gear pumps.
  - Modules, pressure control valves, circulation valves, constant pressure valves, and other similar components are also rebuilt and functionally tested.
-

# Pump/Module/Valve Rebuilding

*Newco*  
enterprises, inc.

**Before**



**After**



# Nozzle and Die Cleaning



- Bead nozzles and all types of spray nozzles and dies are cleaned and individually inspected.
- Out-of-spec spiral spray disks can often be straightened through a Newco-developed process.
- After inspection, nozzles are repackaged and clearly labeled regarding type and orifice size.



# Nozzle and Die Cleaning

**Before**



**After**



# Flexible Hose Restoration

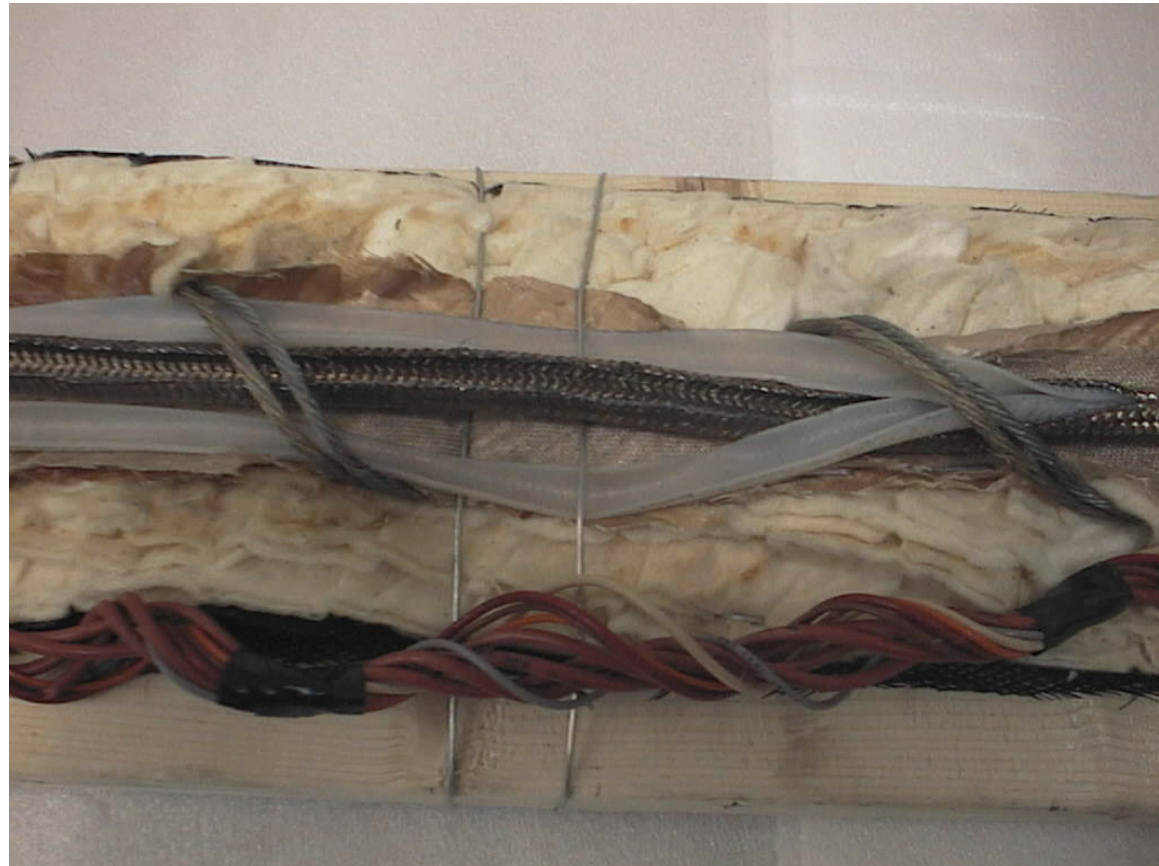


- Flexible hoses are cleaned using a Newco-developed process.
- Heaters and sensors are tested. Hoses cannot be restored if either has failed.
- Connectors and cuffs are cleaned and the hose cover is replaced with a fire-retardant version.
- Original vendor part number and serial number are maintained.

# Flexible Hose Restoration



This is an 11 year old hose that was split after the Newco cleaning process. The arrow shows the inside of the teflon tube, which is completely free from char and other build-up.



# Slot Die Reconditioning



- Slot dies are returned to “like new” condition through a multi-step cleaning and machining process.
- Shims, bolts, and o-rings are replaced.
- Mouthpiece and adapter are made square and true as individual parts, then assembled with the shim and machined true as a set.
- Complete assembly is returned packaged and labeled.

# High Performance Roll Coatings



- More than 400 different coatings are available. Qualities include:
    - ❑ High wear resistance
    - ❑ High release
    - ❑ Traction
    - ❑ Sliding
  - Test and development programs are available to determine the proper coating materials for unique or custom applications.
-

# High Performance Roll Coatings





# Other Coatings



- Folding boards, turning bars, and other high wear components are coated with materials engineered for specific attributes.
- Capability for coating unusual and difficult shapes.